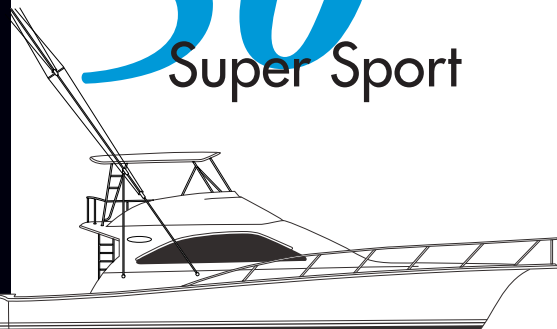


50 Super Sport



Over 30 Years of Family Boat Building Heritage

POWERPLANTS

- Twin Series 60 MTU 14.0L 825 HP Diesels
- Twin Yanmar 8SY-STP 900 HP Diesels
- Twin MAN V8 900 CRM Diesels
- Twin CAT C18 1015 MHP Diesels

STANDARD EQUIPMENT

ENGINE ROOM AND PROPULSION

- Sound & heat insulated engine room
- Anti-fouling bottom paint
- Awlgripped engine room, lazarette & bilges
- Twin diesel, water cooled engines with
 - lubricating oil & recovery systems
- Engine synchronizer
- Engine hour meters
- Alternators
- Fuel filters – main engines & generator
- Propellers (2) – Nibral
- Shafts (2) – Aquamet 22
- Bronze rudders & struts
- Trim tabs
- External sea strainers – large wedge type
- Fiberglass mufflers
- Automatic fire extinguisher system
- Electric oil exchange system –
 - engines & generator
- Heat recovery bottles – engines & generator
- Electric fuel priming pump
- Fuel transfer pump
- Engine room blowers (2)
- Fresh water spigot in engine room
- Electrical outlet
- Engine room cross ventilation

ELECTRICAL SYSTEM

- *Generator, 12.6 kW – water cooled
- Converter – 60 amp
- 50' Shore cord – 50A/240V,
 - with automatic cord reel
- Electrical outlets, 120V
- Batteries (8) – heavy duty,
 - deep cycle/cranking battery (two banks)
- Dyna plate ground system
- Battery parallel system
- Automatic battery charger
- Internal bonding system
- Electrical panel with circuit breakers,
 - voltmeters & battery condition indicator
- Zoned air conditioning
 - with reverse cycle heating
- Zinc anodes
- Galvanic isolator
- 12V step-down transformer for flybridge

LIGHTING SYSTEM

- Navigation lights
- Cockpit courtesy lighting
- 24V & 120V lighting throughout
- Engine room lighting – 24V & 120V
- Back lighting on electrical panel & flybridge instruments

WATER SYSTEM

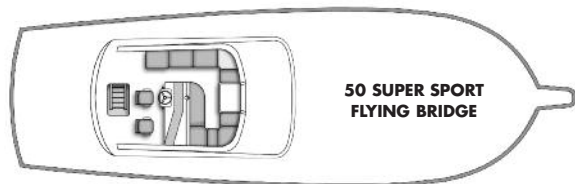
- Hot water heater – 20 gallon †
- Water pressure system
- Enclosed shower sump pump –
 - 24V (automatic)
- Faucets
- Central main drain aft
- VacuFlush head system
- Holding tank – 55 gallon †
- Dockside water connection with
 - pressure reduction valve

DECK AND OUTFITTING

- Bow pulpit with anchor roller
- Rope deck pipe
- Aluminum bow rail with pennant staff
- Window rails – aluminum, powdercoated
- Forward deck hatch
- Cleats (10") – 3 bow, 4 spring, 2 stern
- Hawse pipes (2)
- Docklines (6) – 35' x 5/8"
- Fenders (2) – 8 1/2" x 28"

SAFETY AND NAVIGATION

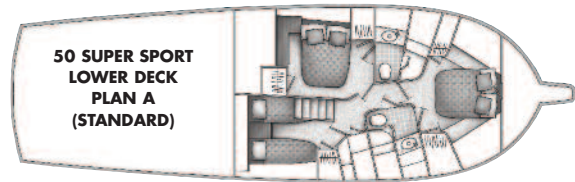
- Anchor – 40 lb Danforth
- Anchor chain – 5' vinyl coated
- Anchor line – 300' x 5/8"
- Fog bell
- Air horns
- Fire extinguishers – 2 1/2 lb portable (3)
 - & 5 lb portable (1)
- Carbon monoxide & smoke detector
- First aid kit
- Olin flare kit
- Life jackets – Type 1 (6) & 20" ring buoy (1)
- VHF radio with antenna
- Furuno RD-30 System for water depth
 - & temperature
- Compass – 4" flush mount
- Hydraulic steering
- Electronic controls with
 - Palm Beach style handles
- Seacocks (quick-action ball valve) –
 - on all through-hull fittings below waterline
- Engine alarm system
- Bilge pumps – automatic (3)
- High bilge water alarm
- Bilge blowers – 4" (2)
- Tinted safety glass



50 SUPER SPORT
FLYING BRIDGE



50 SUPER SPORT
MAIN DECK



50 SUPER SPORT
LOWER DECK
PLAN A
(STANDARD)



50 SUPER SPORT
LOWER DECK
PLAN B
(OPTIONAL)

SPECIFICATIONS

EFFECTIVE AUGUST 1, 2009

Length	.50'6"	15.39 m
Beam	.16'9"	5.10 m
Draft	.4'5"	1.35 m
Freeboard, Bow	.6'1"	1.85 m
Freeboard, Stern	.3'1"	0.94 m
Fuel Capacity	.780 gal.	2,952.30 l
Water Capacity	.150 gal.	567.75 l
Displacement	.54,038 lb.	24,511.64 kg
Height (waterline to top of hardtop)	.18'0"	5.48 m
Headroom (most areas)	.6'5"	1.96 m
Sleeping Capacity		.6-8

*Generator is not intended to supply power for all standard and optional accessories. Load must be limited to generator output rating.

†Capacities of tanks are estimates and useable volume will vary depending upon installation requirements and conditions.

Note: Floorplans may contain options or other features not covered by the base price. Ocean Yachts reserves the right to make changes to its standard or optional equipment list or to what is shown in visual representations of its models in advertising and sales materials. Ocean Yachts may do so at any time and without prior notice. Ocean Yachts also reserves the right to make such changes without incurring any obligations to equip or modify models manufactured prior to the effective date of such change.

STANDARD ACCOMMODATIONS

COCKPIT

Molded fiberglass, self bailing
Molded live baitwell in transom
Rod holders (4)
Seawater & freshwater washdowns
Insulated fishboxes with pumpout (2)
Bait prep center with tackle drawers, sink & freshwater spigot
Freezer
Side lockers
Insulated drink box (in salon entry step)
Stereo speakers (2)
Lazarette access
Engine room access
Transom door & hinged gate
Under-hatch dunnage bin
Boarding step box

FLYING BRIDGE

Fully instrumented, molded fiberglass open flying bridge
Hardtop with molded-in spreader lights & 3-sided enclosure
Pompanette Elite Series helm & companion chairs (2)
Aluminum ladder & aft safety rail with 6 rocket launchers
Chart light
Electrical sub-panel
Electrical outlet (120V)
Accessory outlet (12V)
Fuel gauges
Lounge seating with pleated cushions & storage
Insulated cooler (1)

SALON

Aluminum sliding door with security lock
Carpeting, with canvas runner
Upholstered panels & valances
Headliner
Silhouette blinds
L-shaped lounge seating with rod storage
Designer chair
Central vacuum system
Zoned air conditioning with reverse cycle heating
Icemaker
Retractable 30" LCD flatscreen TV
Bose Lifestyle 18 CD/DVD stereo with remote
Cocktail table with storage
Choice of designer décor selections
Phone outlet

GALLEY/DINETTE

Corian® countertop & sink
Amtico® flooring
Convection/microwave oven
Recessed 3-burner range
Trash compactor
Sub-Zero under counter drawer-style refrigerator (1) & freezer (1)
Booth style dinette with hi-gloss table
Spacious drawers & cabinets
Ground fault electrical outlets

Instant hot water faucet
Exhaust blower
Water tank gauge
Equipment/compressor room (under sole) with storage

MASTER STATEROOM

Full berth with 5" foam mattress & storage
Bedspread, pillows (2) & shams (2)
Nightstand with drawers
Hanging lockers (2)
20" LCD flatscreen TV with DVD player & remote
CD player with AM/FM stereo & speakers
Private head access
Drawers & cabinets

GUEST STATEROOM – PLAN A

Full berth with 5" foam mattress
Bedspread, pillows (2) & shams (2)
Hanging lockers (2)
Private head access
Cabinets
Deck hatch

GUEST STATEROOM – PLAN B

Twin over/under berths with 5" foam mattresses & zippered covers
Pillows (3) & shams (3)
Hanging locker
Cabinets
Deck hatch

CREW STATEROOM

Side by side twin berths with 5" foam mattresses & zippered covers
Pillows (2) & shams (2)
Hanging locker

COMPANIONWAY

Washer & dryer

MASTER AND GUEST HEADS

Private showers with automatic enclosed sump pumps & overhead lighting
Vanities with Corian® countertops & sinks
Mirrored medicine cabinets
VacuFlush heads
Amtico® flooring
Towel bars
Exhaust blowers
Lighting – 24V & 110V
Ground fault outlets – 110V
Storage

50SS OPTIONAL EQUIPMENT

ELECTRICAL

- Bow thruster (24V)
- Built-in 15" LCD Flatscreen TV in (guest or crew staterooms)
- Built-in 15" LCD Flatscreen TV with DVD in (guest or crew staterooms)
- Outlets (extra, each) – 110V, TV, phone
- CD player with AM/FM stereo & speakers (guest or crew staterooms)

DECK & OUTFITTING

- Lewmar Concept II windlass
- Swim platform
- Swim ladder – two step folding
- Teak coverboards
- Teak coamings
- Teak salon entry steps
- Bow washdown
- Gelcoat hull color (ice blue, aqua mist, or fighting lady yellow)
- Custom gelcoat hull color (to be approved by Ocean)
- Spare propellers
- Additional fuel – 98 Gal (878 Gal † Total)
- Emergency bilge valves (ea.)
- Prop Smith – 2 1/2" shaft size

FLYING BRIDGE

- Hatch in hardtop (ea.)
- Costa Clear 3-sided enclosure (in lieu of standard)
- Upper vents in enclosure (ea.)
- Aft enclosure
- Air conditioning with reverse cycle heat
- Safety hatch for flybridge ladder access
- CAT electronic controls with Palm Beach style handles (single station in lieu of standard)
- VHF radio compartment recessed in hardtop with 24V actuation
- Electric teaser reels recessed in hardtop (Miya Epoch US-6)
- Refrigerator/freezer (1) in insulated cooler

FISHING EQUIPMENT

- Rod holders (extra, each)
- Rupp riggers with double box spreaders, 36' poles, & flybridge release (pair)
- Rupp center rigger
- Refrigerated fish box
- Eskimo Icemaker
- Trolling Valves

INTERIOR

- Sofa bed
- Amtico® flooring at salon entrance
- Amtico® flooring under dinette (in lieu of standard)
- Plan B forward stateroom layout (in lieu of standard)
- Bose Lifestyle 38 stereo system (in lieu of standard)
- Clear salon carpet cover (in lieu of standard)
- Steps & companionway runner (canvas)

DECOR

- Accessory package
- Cherry interior – satin finish (in lieu of standard teak)
- Hi-gloss finish for teak or cherry (price does not include cherry interior upgrade)
- Personal choice interior décor selection (custom)

DESIGNER DECOR SELECTIONS Capri Ebony Bronze

DELIVERY PREPARATION Cost of fuel at time of delivery

*Optional equipment prices valid on boats completed at the Ocean Yachts factory no later than July 31, 2010.
Fuel extra at delivery. Lettering of transom with original order.*

POWERED BY



The Best Part Of Life Is Spent On An OceanSM

Ocean Yachts, Inc., PO Box 312, Egg Harbor City, New Jersey 08215
609-965-4616 / Fax 609-965-4914 / oceanyachtsinc.com
info@oceanyachtsinc.com



Every Ocean Yacht is backed by a transferable 5-Year Limited Structural Hull Warranty. Five-Year Engine and Generator Limited Warranties are extended by the respective manufacturers. Ocean was the first manufacturer in the industry to offer such owner protection and peace of mind.

Ocean hulls are NMMA certified, meeting or exceeding the materials and construction standards of the National Marine Manufacturers Association. Warranty program terms and conditions are available upon request.