

65 Odyssey



30 Years of Family Boat Building Heritage

POWERPLANTS

- Twin CAT C18 1015 MHP Diesels
- Twin MAN V10 1100 CRM Diesels
- Twin MAN V12 1360 CRM Diesels

STANDARD EQUIPMENT

- ENGINE ROOM AND PROPULSION**
- Sound & heat insulated engine room
 - Engine room cross ventilation
 - Anti-fouling bottom paint
 - Awlgripped engine room, lazarette & bilges
 - Twin diesel, water cooled engines with lubricating oil & recovery systems
 - Engine synchronizer
 - Engine hour meters
 - Alternators
 - Fuel filters – main engines & generators
 - Propellers (2) – Nibral
 - Shafts (2) – Aquamet 22
 - Bronze rudders & struts
 - Trim tabs
 - External sea strainers – large wedge type
 - Fiberglass mufflers
 - Automatic fire extinguisher system
 - Electric oil exchange system – engines & generator
 - Heat recovery bottles – engines & generator
 - Electric fuel priming pump
 - Fuel transfer pump
 - Engine room blowers (2) & fans (2)
 - Fresh water spigot in engine room
 - Electrical outlet
 - Rudder port seals

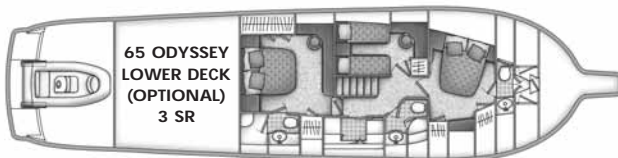
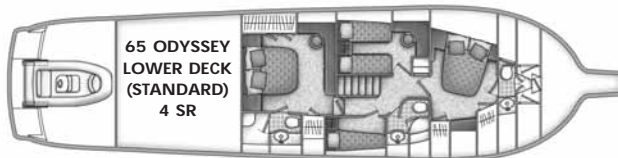
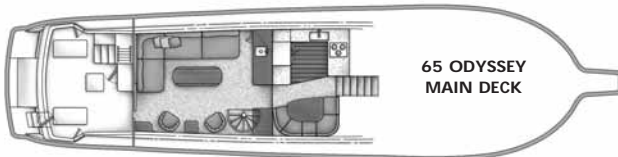
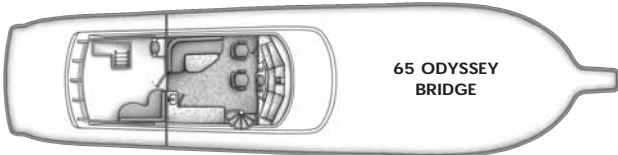
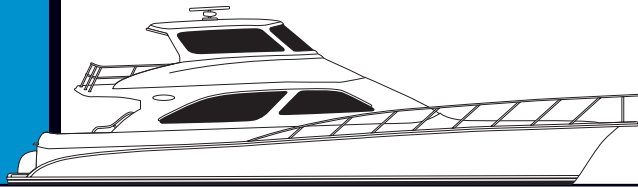
- WATER SYSTEM**
- Hot water heater – 20 gallon
 - Water pressure system
 - Enclosed shower sump pump – 24V (automatic)
 - Faucets
 - Central main drain aft
 - VacuFlush head system
 - Holding tank – 80 gallon
 - Dockside water connection with pressure reduction valve

- DECK & OUTFITTING**
- Bow pulpit with anchor roller
 - Rope locker with freshwater washdown
 - Rope deck pipe
 - Stainless steel bow rail with pennant staff
 - Window rails – aluminum, powdercoated
 - Forward deck hatch
 - Cleats (12") – 3 bow, 4 spring, 2 stern
 - Docklines (6) – 35' x 3/4"
 - Fenders (2) – 12" x 34"
 - Forward deck sunpad with cover

- SAFETY & NAVIGATION**
- Anchor – 65 lb Danforth
 - Anchor chain – 5' vinyl coated
 - Anchor line – 300' x 5/8"
 - Fog bell
 - Deluxe air horns
 - Fire extinguishers – 2 1/2 lb portable (3) & 5 lb portable (1)
 - Carbon monoxide & smoke detector
 - First aid kit
 - Olin flare kit
 - Life jackets – Type 1 (6) & 20" ring buoy (1)
 - VHF radio with antenna
 - Furuno RD-30 System for water depth & temperature
 - Compass – 5" flush mount
 - Power steering
 - Electronic controls
 - Seacocks (quick-action ball valve) – on all through-hull fittings below waterline
 - Fuel shutoff valves (quick-action ball valve)
 - Engine alarm system
 - Bilge pumps – automatic (4)
 - High bilge water alarm
 - Bilge blowers – 4" (2)
 - Tinted safety glass

- ELECTRICAL SYSTEM**
- *Generators – Twin 15.0 kW – water cooled
 - 50' Shore cords (2) – 50A/240V, with automatic cord reels
 - Electrical outlets, 120V
 - Batteries (8) – heavy duty, deep cycle/cranking battery (two banks)
 - Dyna plate ground system
 - Battery parallel system
 - Automatic battery charger
 - Internal bonding system
 - Electrical panel with circuit breakers, voltmeters & battery condition indicator
 - Zoned air conditioning with reverse cycle heating
 - Zinc anodes
 - Galvanic isolator
 - 12V step-down transformer for flybridge

- LIGHTING SYSTEM**
- Navigation lights
 - Sundeck courtesy lighting
 - 24V & 120V lighting throughout
 - Engine room lighting – 24V & 120V
 - Back lighting on electrical panel & flybridge instruments



SPECIFICATIONS

EFFECTIVE AUGUST 1, 2008

Length	.67'6"	.20.57 m
Beam	.17'5"	.5.31 m
Draft	.5'0"	.1.52 m
Freeboard, Bow	.6'9"	.2.06 m
Freeboard, Stern	.5'6"	.1.68 m
Fuel Capacity	.1100 gal.	.4,163.50 l
Water Capacity	.350 gal.	.1,324.75 l
Displacement	.82,000 lb.	.37,195 kg
Height (waterline to top of hardtop)	.18'1"	.5.51 m
Headroom (most areas)	.6'5"	.1.96 m
Sleeping Capacity	.6 - 8	

*Generator is not intended to supply power for all standard and optional accessories. Load must be limited to generator output rating. †Capacities of tanks are estimates and useable volume will vary depending upon installation requirements and conditions. Note: Floorplans may contain options or other features not covered by the base price. Ocean Yachts reserves the right to make changes to its standard or optional equipment list or to what is shown in visual representations of its models in advertising and sales materials. Ocean Yachts may do so at any time and without prior notice. Ocean Yachts also reserves the right to make such changes without incurring any obligations to equip or modify models manufactured prior to the effective date of such change.

STANDARD ACCOMMODATIONS

AFT SUNDECK

Molded fiberglass, self bailing
Molded stern seating with cushions,
storage & table
Freshwater washdown
Stereo speakers (2)
Lazarette access
Engine room access
Port, starboard & transom doors
Underdeck storage areas (2)
Boarding step box
Integrated fiberglass swim platform with
molded steps
Tender storage garage for standard
"Nautica Rib 10" hardbottom jet inflatable
with rollers & winch
Swim ladder

ENCLOSED FLYING BRIDGE

Fully instrumented, molded fiberglass
enclosed flying bridge
Pompanette Prestige Series helm
& companion chairs (2)
Stainless steel ladder & aft safety rail
Electrical sub-panel
Electrical outlets (120V)
Fuel gauges
L-shaped lounge seating with table
Furuno RD-30 Display
Aluminum door
Tinted safety glass
Windshield wipers & defogger
Air conditioning with reverse cycle heat
15" LCD flatscreen TV, DVD player & remote
Spiral staircase to salon
Aft deck steering station with
electronic controls
Headliner, valances & carpeting
Phone outlet
Wet bar with refrigerator/icemaker & storage
Courtesy lighting
Molded aft deck lounge seating with cushions

SALON

Aluminum sliding door with security lock
Carpeting, with canvas runner
Upholstered panels & valances
Headliner
Silhouette blinds
L-shaped lounge seating
Designer chairs (2)
Central vacuum system
Zoned air conditioning with
reverse cycle heating
Icemaker
Retractable 30" LCD flatscreen TV
Bose Lifestyle 38 CD/DVD stereo with remote
Cocktail table with storage
Personal choice interior décor selection (*custom*)
Phone outlet

GALLEY/DINETTE

Corian® countertop & sink
Amtico® flooring

Convection/microwave oven
Recessed 3-burner range
Trash compactor
Upright refrigerator/freezer
Dishwasher
Oven
Booth style dinette with adjustable
hi-gloss table
Spacious drawers & cabinets
Ground fault electrical outlets
Instant hot water faucet
Exhaust blower
Water tank gauge

MASTER STATEROOM

Queen berth with innerspring mattress
& drawer storage
Bedsread, pillows (2), shams (2)
& fitted sheet set
Nightstands (2) with drawers
Hanging lockers (2)
32" LCD flatscreen TV with DVD player
& remote
Bose 321 stereo system
Private head access
Vanity with mirror & stool
Drawers & cabinets

VIP STATEROOM (FORWARD)

Full berth with innerspring mattress
Bedsread, pillows (2), shams (2)
& fitted sheet set
Nightstands (2)
Hanging lockers (2)
20" LCD flatscreen TV with DVD player
& remote
CD player with AM/FM stereo & speakers
Private head access
Cabinets
Deck hatch

GUEST STATEROOM (PORT)

Side by side twin berths with 5" foam mattresses
with zippered covers & drawer storage
Pillows (2), shams (2) & fitted sheet set
Hanging locker/nightstand
Cabinets
15" LCD flatscreen TV with DVD player
& remote
CD player with AM/FM stereo & speakers
Vanity with stool & mirror

CREW STATEROOM (STARBOARD)

Raised single berth with 5" foam mattress
& zippered cover
Pillow (1), sham (1) & fitted sheet set
Hanging locker/nightstand

UTILITY ROOM (OPTIONAL)

Washer & dryer
Electrical sub-panel
Cabinets

MASTER, GUEST, AND CREW HEADS

Private showers with automatic enclosed
sump pumps & overhead lighting
Vanities with Corian® countertops & sinks
Mirrored medicine cabinets
VacuFlush heads
Amtico® flooring
Towel bars
Exhaust blowers
Lighting – 24V & 110V
Ground fault outlets – 110V
Storage
Deck hatch (guest head)

65 ODYSSEY OPTIONAL EQUIPMENT

ELECTRICAL

- 24V bow thruster
- Outlet – extra 110V duplex, TV outlet, phone jack (*ea.*)

DECK & OUTFITTING

- Lewmar Concept III windlass
- Gelcoat hull color (*ice blue, aqua mist, or fighting lady yellow*)
- Custom gelcoat hull color (*to be approved by Ocean*)
- Spare propellers
- Sea recovery watermaker
- Emergency bilge valves (*ea.*)
- Prop Smith – 3 1/2" shaft size

FLYING BRIDGE

- Hatch in hardtop (*ea.*)
- CAT electronic controls, two station (*in lieu of standard*)
- Outdoor grill cabinet with storage
- Clear flybridge carpet cover

INTERIOR

- Sofa bed
- Amtico® flooring at salon entrance
- Amtico® flooring under dinette (*in lieu of standard*)
- Padded whisper walls (*lower level passageway*)
- Clear salon carpet cover (*in lieu of standard*)
- Steps & companionway runner
- Optional laundry/utility center (*in lieu of crew stateroom*)

DECOR

- Accessory package
- Cherry interior – satin finish (*in lieu of standard teak*)
- Hi-gloss finish for teak or cherry
(*price does not include cherry interior upgrade*)

DELIVERY PREPARATION

- Cost of fuel at time of delivery

Optional equipment prices valid on boats completed at the Ocean Yachts factory no later than July 31, 2009.

Fuel extra at delivery. Lettering of transom with original order.

POWERED BY



The Best Part Of Life Is Spent On An OceanSM

Ocean Yachts, Inc., PO Box 312, Egg Harbor City, New Jersey 08215
609-965-4616 / Fax 609-965-4914 / oceanyachtsinc.com
info@oceanyachtsinc.com



Every Ocean Yacht is backed by a transferable 5-Year Limited Structural Hull Warranty. Five-Year Engine and Generator Limited Warranties are extended by the respective manufacturers. Ocean was the first manufacturer in the industry to offer such owner protection and peace of mind.

Ocean hulls are NIMMA certified, meeting or exceeding the materials and construction standards of the National Marine Manufacturers Association. Warranty program terms and conditions are available upon request.